

Colors



Midas Gold



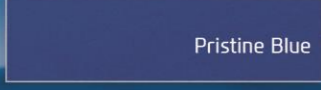
Mystic Blue



Polar White



Phantom Black



Pristine Blue



Red Passion



Sleek Silver



Star Dust



- Photos may vary from actual unit and accessories.
- Some of the other features may not be available in other regions or variants. Consult your dealer on the features available.
- Some of the equipment described in this catalogue may not be supplied as standard equipment and may be available at extra cost. Hyundai Asia Resources, Inc. reserves the right to change specifications and equipment without prior notice.
- The colors shown may vary slightly from the actual colors due to the limitations of the printing process.



EXCLUSIVE DISTRIBUTOR OF HYUNDAI
HYUNDAI ASIA RESOURCES, INC.

EON



HYUNDAI
NEW THINKING.
NEW POSSIBILITIES.

EON



1



3



2



4



1. Epsilon 0.8 MPI Engine
2. Cargo Space (215L)

3. Reinforced Body Structure
4. Rear Spoiler

MODEL		EON	
Variant		0.8 GLX 5M/T	
Seating Capacity		Five (5)	
ENGINE			
General	Displacement	cc	814 (EURO 4)
	Max Power	ps/rpm	56 / 5500
	Max Torque	kg-m/rpm	7.6 / 4000
	Cylinder Layout		3 Cylinder In-line
Lubricant Capacity	L	2.5	
TRANSMISSION			
Type	5-Speed Manual		
STEERING			
General		Rack & Pinion	
Steering Wheel		Manual Tilt	
Power Assisted		Motor Driven Power Steering (MDPS)	
CHASSIS			
Suspension		Front/Rear	MacPherson Strut Type / Torsion Beam Axle
Shock Absorber		Oil Type	
Brake Type		Front/Rear	Disc / Drum
Wheels and Tires		Steel Rim with Frt Wheel Cover, 4.5J 13", 155/70 R13	
DIMENSIONS			
Body Type		5-Door Hatchback	
Overall Length x Width x Height		mm	3495 x 1550 x 1500
Wheelbase		mm	2380
Fuel Tank Capacity		L	32
Curb Weight		kg	748 ~ 788
Gross Vehicle Weight		kg	1190
EXTERIOR FEATURES			
Front and Rear Bumpers		Body Color	
Hexagonal Grille (upper air intake)		Black color + Chrome	
Antenna		Micro-Antenna	
Front Wipers		Intermittent (non-variable), 2-Speed	
Door Handles		Body Color	
Side View Mirrors		Body Color	
Rear Spoiler		w/ High Mount Stop Lamp	
SAFETY AND SECURITY			
Side Impact Bars		with	
Side Repeater		Fender	
Seatbelt		Front	ELR
		Rear	Side: 3-pt. ELR (x2), Center: Static
Child Safety Rear Door Lock		with	
High Mount Stop Lamp		with	
INTERIOR AND CONVENIENCE FEATURES			
Sunvisor		Driver and Passenger	
Room Lamp		Front Room Lamp	
Assist Grip		Front	Front (x1), Rear (x2)
Center Fascia		with Open Storage Tray	
Center Cluster		with Welcoming Light	
Headrest		Front	Fixed
		Rear	Fixed
Inside Door Handle		Metal Paint	
Door Map Pockets		Formed Type Finish'g Door (+ Front Map Pocket)	
Cup Holders		with (x5)	
Seat Material		Cloth + Vinyl	
Rear Seats		Bench Folding	
Luggage Space		L	215 (VDA)
Power Windows		Front	
Audio System		1-DIN AM/FM Tuner, CD, MP3 and Aux-in	
Speakers		Front	
Air Conditioning		Manual, 4-Speed Fan Blower w/ Front Heater Core	